



Village Priority Project: Central Area Storm Sewer Project, Village of La Grange Park

Cost: \$10.5 Million

Need: \$4 Million

Summary. The Village has experienced a number of flooding events throughout the years when excessive rainfall overwhelms the capacity of the Village’s sewer system. The weekend of June 26th, the Village sustained over 4.5 inches of rain, including two inches that fell in just two hours that Saturday. While rainwater receded relatively quickly, many residential homes were impacted by water infiltration and overland flooding. Village staff facilitated a special garbage collection for flood damaged items without any charge and continues to follow up with a number of residents to discuss options to manage the impacts of the rain events on their property.

Problem: Central Area Flooding. The Central Area (bounded by 31st Street on the north, La Grange Road on the west, Homestead Road on the south and the IHB Railroad on the east) has experienced increased frequency of flooding and damage in recent years. To mitigate the impacts of high-intensity rain events in this area, the Village developed plans for the Central Area Stormwater Relief Project.

2020 Grant Application for Rebuild Illinois Program. In 2020, as a result of the high intensity storms on May 17th, the Village sustained area wide flooding, and particularly in the Central Area of the Village. The Village collected data and garnered community support and submitted a grant application with a request of \$5 Million to the state’s Rebuild Illinois Public Infrastructure Grant. To date, we have not heard anything regarding the status of our application. We are hoping that there are funds available for our need.

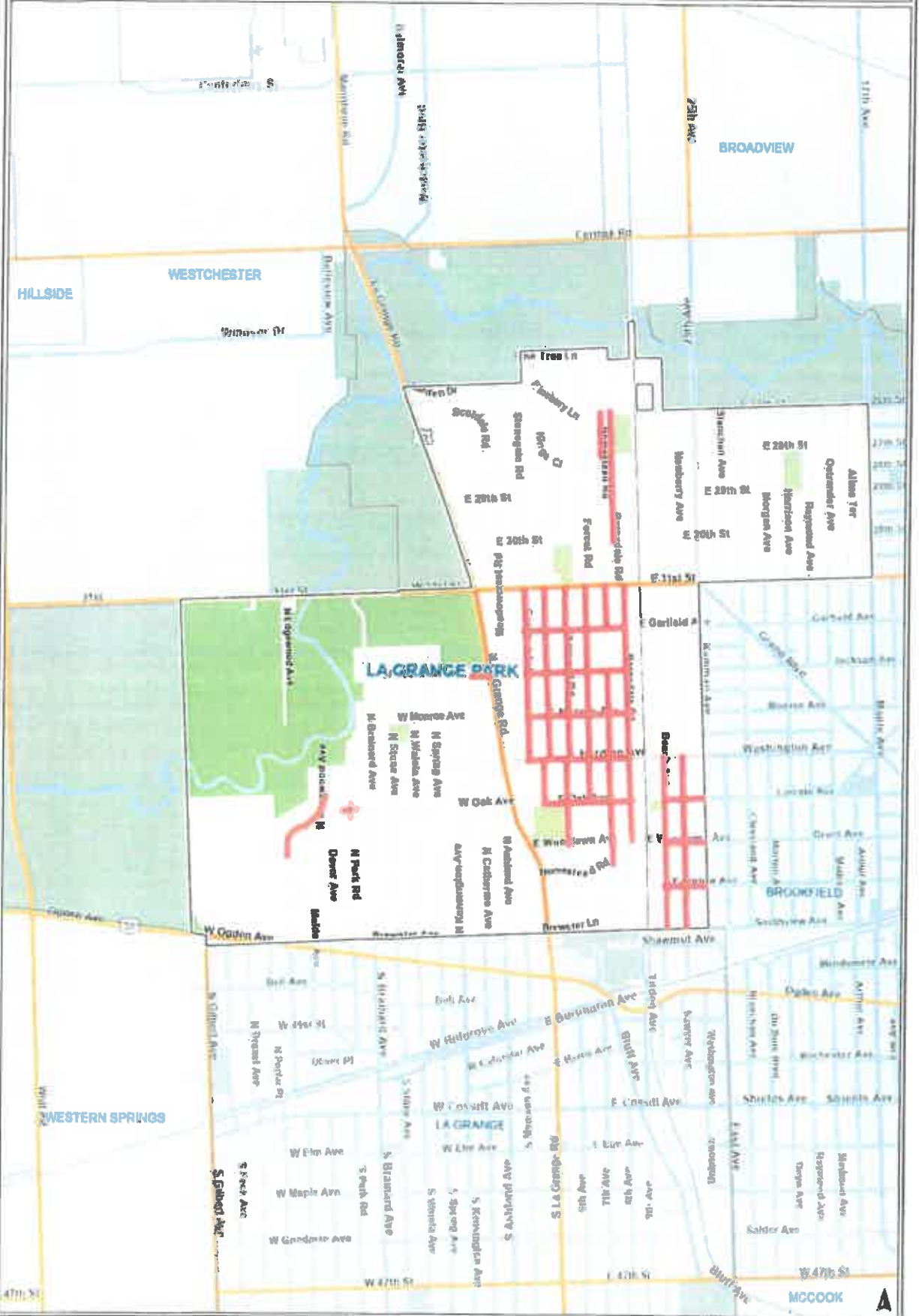
Central Area Storm Sewer Project. A preliminary plan for the Central Area Sewer Separation Program has been in existence for several years, the Village has not had the funds or resources to move forward and implement the final design and subsequent construction. The entire project is estimated to cost approximately \$10,225,000 which includes design and construction engineering services.

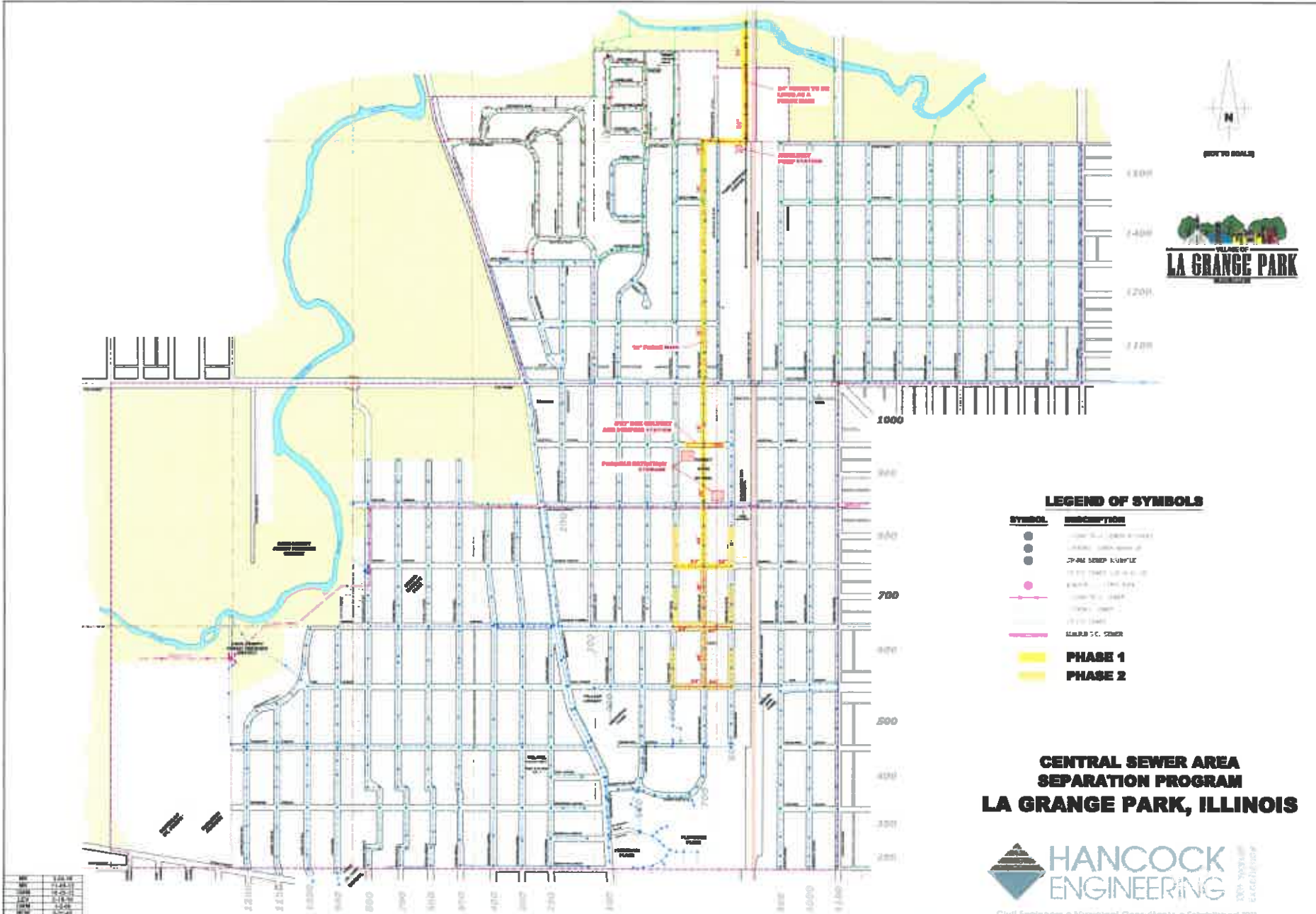
Village will Fund:	\$5 Million
ARPA (federal funds):	\$1.6 Million
Cost of the project:	\$10.5 Million
NEED:	\$ 4 Million

Village Contacts.

Julia Cedillo Village Manager jcedillo@lagrangepark.org	Rick Radde Director of Public Works rradde@lagrangepark.org	Dr. James Discipio Village President 7 jdiscipio@lagrangepark.org
---	---	--

GIS Consortium La Grange Park Street Flooding History





(NOT TO SCALE)



LEGEND OF SYMBOLS

SYMBOL	DESCRIPTION
●	12" DIA. SANITARY SEWER
●	18" DIA. SANITARY SEWER
●	24" DIA. SANITARY SEWER
●	36" DIA. SANITARY SEWER
●	48" DIA. SANITARY SEWER
●	60" DIA. SANITARY SEWER
●	72" DIA. SANITARY SEWER
●	84" DIA. SANITARY SEWER
●	96" DIA. SANITARY SEWER
●	108" DIA. SANITARY SEWER
●	120" DIA. SANITARY SEWER
●	144" DIA. SANITARY SEWER
●	180" DIA. SANITARY SEWER
●	216" DIA. SANITARY SEWER
●	240" DIA. SANITARY SEWER
●	300" DIA. SANITARY SEWER
●	360" DIA. SANITARY SEWER
●	420" DIA. SANITARY SEWER
●	480" DIA. SANITARY SEWER
●	540" DIA. SANITARY SEWER
●	600" DIA. SANITARY SEWER
●	660" DIA. SANITARY SEWER
●	720" DIA. SANITARY SEWER
●	780" DIA. SANITARY SEWER
●	840" DIA. SANITARY SEWER
●	900" DIA. SANITARY SEWER
●	960" DIA. SANITARY SEWER
●	1020" DIA. SANITARY SEWER
●	1080" DIA. SANITARY SEWER
●	1140" DIA. SANITARY SEWER
●	1200" DIA. SANITARY SEWER
●	1260" DIA. SANITARY SEWER
●	1320" DIA. SANITARY SEWER
●	1380" DIA. SANITARY SEWER
●	1440" DIA. SANITARY SEWER
●	1500" DIA. SANITARY SEWER
●	1560" DIA. SANITARY SEWER
●	1620" DIA. SANITARY SEWER
●	1680" DIA. SANITARY SEWER
●	1740" DIA. SANITARY SEWER
●	1800" DIA. SANITARY SEWER
●	1860" DIA. SANITARY SEWER
●	1920" DIA. SANITARY SEWER
●	1980" DIA. SANITARY SEWER
●	2040" DIA. SANITARY SEWER
●	2100" DIA. SANITARY SEWER
●	2160" DIA. SANITARY SEWER
●	2220" DIA. SANITARY SEWER
●	2280" DIA. SANITARY SEWER
●	2340" DIA. SANITARY SEWER
●	2400" DIA. SANITARY SEWER
●	2460" DIA. SANITARY SEWER
●	2520" DIA. SANITARY SEWER
●	2580" DIA. SANITARY SEWER
●	2640" DIA. SANITARY SEWER
●	2700" DIA. SANITARY SEWER
●	2760" DIA. SANITARY SEWER
●	2820" DIA. SANITARY SEWER
●	2880" DIA. SANITARY SEWER
●	2940" DIA. SANITARY SEWER
●	3000" DIA. SANITARY SEWER
●	3060" DIA. SANITARY SEWER
●	3120" DIA. SANITARY SEWER
●	3180" DIA. SANITARY SEWER
●	3240" DIA. SANITARY SEWER
●	3300" DIA. SANITARY SEWER
●	3360" DIA. SANITARY SEWER
●	3420" DIA. SANITARY SEWER
●	3480" DIA. SANITARY SEWER
●	3540" DIA. SANITARY SEWER
●	3600" DIA. SANITARY SEWER
●	3660" DIA. SANITARY SEWER
●	3720" DIA. SANITARY SEWER
●	3780" DIA. SANITARY SEWER
●	3840" DIA. SANITARY SEWER
●	3900" DIA. SANITARY SEWER
●	3960" DIA. SANITARY SEWER
●	4020" DIA. SANITARY SEWER
●	4080" DIA. SANITARY SEWER
●	4140" DIA. SANITARY SEWER
●	4200" DIA. SANITARY SEWER
●	4260" DIA. SANITARY SEWER
●	4320" DIA. SANITARY SEWER
●	4380" DIA. SANITARY SEWER
●	4440" DIA. SANITARY SEWER
●	4500" DIA. SANITARY SEWER
●	4560" DIA. SANITARY SEWER
●	4620" DIA. SANITARY SEWER
●	4680" DIA. SANITARY SEWER
●	4740" DIA. SANITARY SEWER
●	4800" DIA. SANITARY SEWER
●	4860" DIA. SANITARY SEWER
●	4920" DIA. SANITARY SEWER
●	4980" DIA. SANITARY SEWER
●	5040" DIA. SANITARY SEWER
●	5100" DIA. SANITARY SEWER
●	5160" DIA. SANITARY SEWER
●	5220" DIA. SANITARY SEWER
●	5280" DIA. SANITARY SEWER
●	5340" DIA. SANITARY SEWER
●	5400" DIA. SANITARY SEWER
●	5460" DIA. SANITARY SEWER
●	5520" DIA. SANITARY SEWER
●	5580" DIA. SANITARY SEWER
●	5640" DIA. SANITARY SEWER
●	5700" DIA. SANITARY SEWER
●	5760" DIA. SANITARY SEWER
●	5820" DIA. SANITARY SEWER
●	5880" DIA. SANITARY SEWER
●	5940" DIA. SANITARY SEWER
●	6000" DIA. SANITARY SEWER
●	6060" DIA. SANITARY SEWER
●	6120" DIA. SANITARY SEWER
●	6180" DIA. SANITARY SEWER
●	6240" DIA. SANITARY SEWER
●	6300" DIA. SANITARY SEWER
●	6360" DIA. SANITARY SEWER
●	6420" DIA. SANITARY SEWER
●	6480" DIA. SANITARY SEWER
●	6540" DIA. SANITARY SEWER
●	6600" DIA. SANITARY SEWER
●	6660" DIA. SANITARY SEWER
●	6720" DIA. SANITARY SEWER
●	6780" DIA. SANITARY SEWER
●	6840" DIA. SANITARY SEWER
●	6900" DIA. SANITARY SEWER
●	6960" DIA. SANITARY SEWER
●	7020" DIA. SANITARY SEWER
●	7080" DIA. SANITARY SEWER
●	7140" DIA. SANITARY SEWER
●	7200" DIA. SANITARY SEWER
●	7260" DIA. SANITARY SEWER
●	7320" DIA. SANITARY SEWER
●	7380" DIA. SANITARY SEWER
●	7440" DIA. SANITARY SEWER
●	7500" DIA. SANITARY SEWER
●	7560" DIA. SANITARY SEWER
●	7620" DIA. SANITARY SEWER
●	7680" DIA. SANITARY SEWER
●	7740" DIA. SANITARY SEWER
●	7800" DIA. SANITARY SEWER
●	7860" DIA. SANITARY SEWER
●	7920" DIA. SANITARY SEWER
●	7980" DIA. SANITARY SEWER
●	8040" DIA. SANITARY SEWER
●	8100" DIA. SANITARY SEWER
●	8160" DIA. SANITARY SEWER
●	8220" DIA. SANITARY SEWER
●	8280" DIA. SANITARY SEWER
●	8340" DIA. SANITARY SEWER
●	8400" DIA. SANITARY SEWER
●	8460" DIA. SANITARY SEWER
●	8520" DIA. SANITARY SEWER
●	8580" DIA. SANITARY SEWER
●	8640" DIA. SANITARY SEWER
●	8700" DIA. SANITARY SEWER
●	8760" DIA. SANITARY SEWER
●	8820" DIA. SANITARY SEWER
●	8880" DIA. SANITARY SEWER
●	8940" DIA. SANITARY SEWER
●	9000" DIA. SANITARY SEWER
●	9060" DIA. SANITARY SEWER
●	9120" DIA. SANITARY SEWER
●	9180" DIA. SANITARY SEWER
●	9240" DIA. SANITARY SEWER
●	9300" DIA. SANITARY SEWER
●	9360" DIA. SANITARY SEWER
●	9420" DIA. SANITARY SEWER
●	9480" DIA. SANITARY SEWER
●	9540" DIA. SANITARY SEWER
●	9600" DIA. SANITARY SEWER
●	9660" DIA. SANITARY SEWER
●	9720" DIA. SANITARY SEWER
●	9780" DIA. SANITARY SEWER
●	9840" DIA. SANITARY SEWER
●	9900" DIA. SANITARY SEWER
●	9960" DIA. SANITARY SEWER
●	10020" DIA. SANITARY SEWER

**CENTRAL SEWER AREA
SEPARATION PROGRAM
LA GRANGE PARK, ILLINOIS**



Civil Engineers • Mechanical Consultants • Established 1911

DATE	DESCRIPTION
10/1/11	ISSUED FOR PERMIT
10/1/11	ISSUED FOR CONSTRUCTION
10/1/11	ISSUED FOR AS-BUILT
10/1/11	ISSUED FOR RECORD
10/1/11	ISSUED FOR FINAL

June 2020 (the scope of this project is continuously updated)

Project Summary for Community Project Funding Grant

Village of LaGrange Park, Illinois

Central Area Sewer Separation Program

The proposed Central Area Sewer Separation Program is a critically needed project to provide flood relief to residents in LaGrange Park. The proposed storm sewer will provide localized flooding relief to the area of the Village bounded by 31st Street on the north, LaGrange Road on the west, Homestead Road on the south and the IHB Railroad on the east. This area has experienced increased frequency of flooding and damage in recent years. The storm on May 17, 2020 had the greatest extent of flooding and property damage ever recorded for this area. The flooding resulted in damage to structures due to overland runoff and basement back-up. The topography of the area slopes from west to east from Language Road with the IHB Railroad embankment being a barrier on the east. The area is slightly pitched from the north and south to a low area along Monroe Avenue. There are several localized low areas within the broader area, namely the intersections of Barnsdale Road and Jackson Avenues, and on Monroe between Forest Road and Barnsdale Road.

The existing sewer network consists of combination sewers that are inadequate to convey both the sanitary and storm water flows during heavy rain events. When the sewers surcharge into basements or from open catch basin lids in the street, a combination of storm water and sanitary sewage is present creating a great public health concern. This project is of vital importance to the administration, local schools, businesses, and residents to help alleviate and reduce the frequency and magnitude of those types of events.

The Forest Road School is located at Barnsdale Road and Jackson Avenue at the center of a localized low area. When this area floods it endangers not just the building, but the students and faculty as well. The local elementary school district has submitted a letter of support for the project.

A safe and healthy community where residents live and shop helps promote economic growth and stability. A viable neighborhood will attract workers and businesses. This is one of the goals of the Rebuild Illinois capital plan and the Governor's Five-Year Economic Plan. This sewer separation program will help achieve the goal of a safe community where residents desire to live and work without the fear of flooding and the expense of repairing their homes and property. Money used by residents to repair flood damage could be better spent in other areas of the local economy.

The Village will incorporate Affirmative Action stipulations into the project specifications that will require MBE, WBE and SBE participation by the successful bidder. The general contractor will need to submit a Utilization Plan that outlines the DBE vendors or subcontractors they intend to use on the project.

A preliminary plan for the Central Area Sewer Separation Program has been in existence for several years, the Village has not had the funds or resources to move forward and implement the final design and subsequent construction. The project can be built in stages, but the underground storage, the pump station and force main must be built first as a means to collect the water and pump it out. The entire project is estimated to cost approximately \$10,225,00 which includes design and construction engineering services. The first stage of the project, which is part of this application, is estimated to cost about \$7,150,000.

This project is the first stage of a planned network of sewers, storm water detention in pipes or underground storage, and pumped discharge in a force main to Salt Creek. The first stage consists of large diameter 48" and 24" storm sewers installed in Homestead Road and Monroe Avenue that will drain to an 8' x 7' box culvert under Garfield Avenue. The box culvert will be connected to an underground wet well and pump station at Garfield Avenue and Homestead Road. The storm water will be detained in the box culvert and over-sized sewers and then pumped at a controlled rate through a force main that will discharge to Salt Creek. See the attached location map. Future phases of the project will incorporate large diameter storm sewers between Monroe Avenue and Oak Avenue as well as combined surface and underground detention that utilizes Green Infrastructure methods. The project would require permitting through the Metropolitan Water Reclamation District of Greater Chicago (MWRDGC), IDOT, and the Illinois Environmental Protection Agency because of the relocation of a water main on Jackson Avenue.

The village is currently paying the debt service on a road bond which will not expire until 2026. Due to the ever-increasing occurrence of severe storms and heavy rainfall events, the Village feels it can't wait six years to implement a project to reduce this flooding. An award from the Community Project Funding earmark would be a substantial step towards achieving the goal of a safe and livable community that would contribute to the overall economic revitalization the state is seeking.

Storm Event May 17, 2020



Central Area Flooding



Central Area Flooding



Central Area Flooding



CHICAGO OFFICE
 5051 W. CHICAGO AVE.
 CHICAGO, IL 60651
 773.378.5902 OFFICE
 repford@laahawnford.com



CAPITOL OFFICE
 239-E STRATTON BUILDING
 SPRINGFIELD, IL 62706
 217.782.5962 OFFICE
 217.557.4502 FAX

La Shawn K. Ford
State Representative
8th District

June 24, 2020

To Whom It May Concern:

I am pleased to provide this letter of support on behalf of the Village of La Grange Park to be submitted with a grant application for their Central Area Sewer Separation Program. The Central Area of La Grange Park has long awaited a project of this magnitude to assist with significant flooding.

The Village of La Grange Park maintains and operates a complicated sewer conveyance system mostly combined (sanitary and storm) which connects with the Metropolitan Water Reclamation District of Greater Chicago's (MWRDGC) system. During a heavy rain event, La Grange Park's system becomes overloaded with storm water that backs up in basements, severely damaging homes, businesses, and schools. Not only do backups from the sewer system itself occur, but roadways also become impassable creating a hazard and causing additional overland flooding into homes.

During the day on May 17, 2020, the Village received approximately three and a half inches of rain throughout the day. The sewer system, including MWRDGC's, worked until hit by a torrential downpour that occurred at approximately 5:30 p.m. dumping two inches of rain over a sixty-minute time span. This additional rainfall, hitting a system already near capacity and having nowhere else to go, caused significant flooding to the central area of the community. These types of storms are occurring more and more frequently with repetitive damage occurring to the same structures.

The proposed storm sewer separation will convey storm water directly to the Salt Creek River system instead of the combined sewer system. To construct a system capable of handling volume of this magnitude requires many thousands of feet of concrete pipe, a box culvert for the receiving water, and a pump system designed to discharge a high rate of water over 5,000 feet to the creek. The proposed system carries a burdensome price tag of over seven million dollars which the Village cannot shoulder alone.

In short, this important project provides flood relief to La Grange Park's central area and the residents who live there. Additionally, this project is critical since the sewers carry both storm water and sanitary sewage. As a community partner with the Village of La Grange Park, I fully support the Village's efforts with this project. I believe this project to be precisely the kind that would bring relief to our community and provide ample work to "restart" our state's economy. It is my hope that the Village's effort and commitment to alleviate this issue finds a favorable response.

Sincerely,

La Shawn K. Ford
 State Representative-Eighth District

SENATE MAJORITY LEADER
KIMBERLY A.
LIGHTFORD
STATE SENATOR • 4TH DISTRICT

District Office

4415 Harrington St., Suite 550
 Hillside, IL 60162
 (708) 632-4500
 (708) 632-4515 FAX

Springfield Office

329A Capitol Building
 Springfield, IL 62706
 (217) 782-8505

Committees

Assignments (Chairperson)
 Education
 Energy and Public Utilities
 Executive
 Executive Appointments

June 24, 2020

**RE: Village of La Grange Park Rebuild Illinois Grant Application
 (Central Area Sewer Separation Program)**

To Whom It May Concern:

I am pleased to provide this letter of support on behalf of the Village of La Grange Park to be submitted with a grant application for their Central Area Sewer Separation Program. The Central Area of La Grange Park has long awaited a project of this magnitude to assist with significant flooding.

The Village of La Grange Park maintains and operates a complicated sewer conveyance system mostly combined (sanitary and storm) which connects with the Metropolitan Water Reclamation District of Greater Chicago's (MWRDGC) system. During a heavy rain event, La Grange Park's system becomes overloaded with storm water that backs up in basements, severely damaging homes, businesses, and schools. Not only do backups from the sewer system itself occur, but roadways also become impassable creating a hazard and causing additional overland flooding into homes.

During the day on May 17, 2020, the Village received approximately three and a half inches of rain throughout the day. The sewer system, including MWRDGC's, worked until hit by a torrential downpour that occurred at approximately 5:30 p.m., dumping two inches of rain over a sixty-minute time span. This additional rainfall, hitting a system already near capacity and having nowhere else to go, caused significant flooding to the central area of the community. These types of storms are occurring more and more frequently with repetitive damage occurring to the same structures.

The proposed storm sewer separation will convey storm water directly to the Salt Creek River system instead of the combined sewer system. To construct a system capable of handling volume of this magnitude requires many thousands of feet of concrete pipe, a box culvert for the receiving water, and a pump system designed to discharge a high rate of water over 5,000 feet to the creek. The proposed system carries a burdensome price tag of over seven million dollars which the Village cannot shoulder alone.

In short, this important project provides flood relief to La Grange Park's central area and the residents who live there. Additionally, this project is critical since the sewers carry both storm water and sanitary sewage. As a community partner with the Village of La Grange Park, I fully support the Village's efforts with this project. I believe this project to be precisely the kind that would bring relief to our community and provide ample

SENATE MAJORITY LEADER
KIMBERLY A.
LIGHTFORD
STATE SENATOR • 4TH DISTRICT

District Office

4415 Harrington St., Suite 550
 Hillside, IL 60162
 (708) 632-4500
 (708) 632-4515 FAX

Springfield Office

329A Capitol Building
 Springfield, IL 62706
 (217) 782-8505

Committees

Assignments (Chairperson)
 Education
 Energy and Public Utilities
 Executive
 Executive Appointments

work to “restart” our state’s economy. It is my hope that the Village’s effort and commitment to alleviate this issue finds a favorable response.

Respectfully,

Kimberly A. Lightford

Senator Kimberly A. Lightford
 Senate Majority Leader
 4th District

HOUSE OF REPRESENTATIVES

DISTRICT OFFICE:
1 Riverside Rd., Suite 204A
Riverside, IL 60546
708-442-6900
708-442-6901 FAX

SPRINGFIELD OFFICE:
229-S Station Building
Springfield, IL 62706
217-782-8280



COMMITTEES:
Health Care Licenses
Insurance
Judiciary- Criminal
Personnel & Pensions- Vice Chair
Revenue & Finance- Chair

MICHAEL J. ZALEWSKI
STATE REPRESENTATIVE
23RD DISTRICT

June 15, 2020

RE: Village of La Grange Park Rebuild Illinois Grant Application (Central Area Sewer Separation Program)

To Whom It May Concern:

I am pleased to provide this letter of support on behalf of the Village of La Grange Park to be submitted with a grant application for their Central Area Sewer Separation Program. The Central Area of La Grange Park has long awaited a project of this magnitude to assist with significant flooding.

The Village of La Grange Park maintains and operates a complicated sewer conveyance system mostly combined (sanitary and storm) which connects with the Metropolitan Water Reclamation District of Greater Chicago's (MWRDGC) system. During a heavy rain event, La Grange Park's system becomes overloaded with stormwater that backs up in basements, severely damaging homes, businesses, and schools. Not only do backups from the sewer system itself occur, but roadways also become impassable creating a hazard and causing additional overland flooding into homes.

During the day on May 17, 2020, the Village received approximately three and a half inches of rain throughout the day. The sewer system, including MWRDGC's, worked until hit by a torrential downpour that occurred at approximately 5:30 p.m. dumping two inches of rain over a sixty-minute time span. This additional rainfall, hitting a system already near capacity and having nowhere else to go, caused significant flooding to the central area of the community. These types of storms are occurring more and more frequently with repetitive damage occurring to the same structures.

The proposed storm sewer separation will convey storm water directly to the Salt Creek River system instead of the combined sewer system. To construct a system capable of handling volume of this magnitude requires many thousands of feet of concrete pipe, a box culvert for the receiving water, and a pump system designed to discharge a high rate of water over 5,000 feet to the creek. The proposed system carries a burdensome price tag of over seven million dollars which the Village cannot shoulder alone.

ILLINOIS HOUSE OF REPRESENTATIVES

DISTRICT OFFICE:
10055 WEST ROOSEVELT ROAD
WESTCHESTER, ILLINOIS 60154
PHONE: 708/450-1000
FAX: 708/450-1104

SPRINGFIELD OFFICE:
249-E STRATTON BUILDING
SPRINGFIELD, ILLINOIS 62706
PHONE: 217/782-8120
FAX: 217/524-0448



COMMITTEES:
• EXECUTIVE-CHAIRPERSON
• REVENUE & FINANCE
• INSURANCE
• HIGHER EDUCATION
• COUNTIES & TOWNSHIPS
• CITIES & VILLAGES

EMANUEL "CHRIS" WELCH
STATE REPRESENTATIVE • 7TH DISTRICT

June 18, 2020

RE: Village of La Grange Park Rebuild Illinois Grant Application (Central Area Sewer Separation Program)

To Whom It May Concern:

I am pleased to provide this letter of support on behalf of the Village of La Grange Park to be submitted with a grant application for their Central Area Sewer Separation Program. The Central Area of La Grange Park has long awaited a project of this magnitude to assist with significant flooding.

The Village of La Grange Park maintains and operates a complicated sewer conveyance system mostly combined (sanitary and storm) which connects with the Metropolitan Water Reclamation District of Greater Chicago's (MWRDGC) system. During a heavy rain event, La Grange Park's system becomes overloaded with storm water that backs up in basements, severely damaging homes, businesses, and schools. Not only do backups from the sewer system itself occur, but roadways also become impassable creating a hazard and causing additional overland flooding into homes.

During the day on May 17, 2020, the Village received approximately three and a half inches of rain throughout the day. The sewer system, including MWRDGC's, worked until hit by a torrential downpour that occurred at approximately 5:30 p.m. dumping two inches of rain over a sixty-minute time span. This additional rainfall, hitting a system already near capacity and having nowhere else to go, caused significant flooding to the central area of the community. These types of storms are occurring more and more frequently with repetitive damage occurring to the same structures.

The proposed storm sewer separation will convey storm water directly to the Salt Creek River system instead of the combined sewer system. To construct a system capable of handling volumes of this magnitude requires many thousands of feet of concrete pipe, a box culvert for the receiving water, and a pump system designed to discharge a high rate of water over 5,000 feet to the creek. The proposed system carries a burdensome price tag of over seven million dollars which the Village cannot shoulder alone.

In short, this important project provides flood relief to La Grange Park's central area and the residents who live there. Additionally, this project is critical since the sewers carry both storm water and sanitary sewage. As a community partner with the Village of La Grange Park, I fully support the Village's efforts with this project. I believe this project to be precisely the kind that would bring relief to our community and provide ample work to "restart" our state's economy. It is my hope that the Village's effort and commitment to alleviate this issue finds a favorable response.

Respectfully,

Emanuel "Chris" Welch
State Representative, 7th District